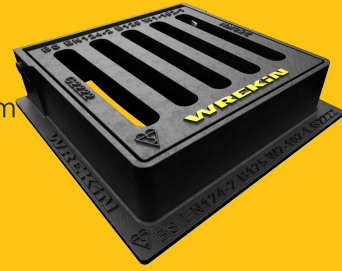


DGHOB3/2222/F

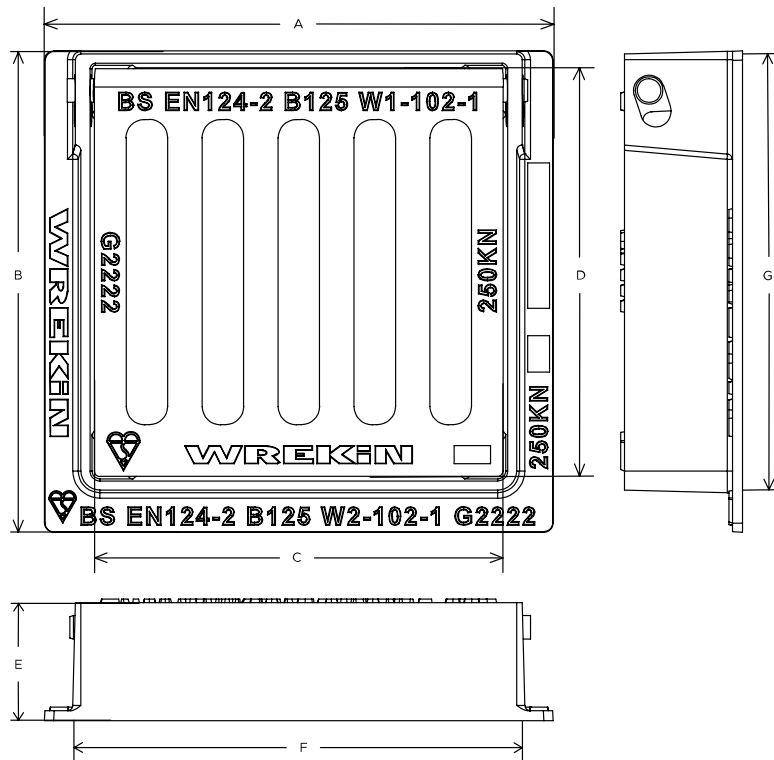
Tristar B125 3 flange gully grate 225mm x 225mm clear opening with 65mm frame depth



RANGE	CLEAR OPENING (MM)	BASE OPENING (MM)	OVERALL FRAME (MM)	FRAME DEPTH (MM)	WATERWAY AREA (CM ²)	OPTIONS
Tristar	225 x 225	225 x 225	280 x 265	65	210	<input type="checkbox"/> Screw locking

KEY FEATURES

- ✓ Captive hinges reduce theft risk whilst allowing easy lifting.



SPECIFICATION

General information

Stock code	DGH0B3/2222/F
Primary material	Ductile iron
Range	Tristar
Category	Gully grate
Flanges	3

Standards, classes and groupings

Standards	BS EN 124-2
BS EN 124 Class	B125
BS EN 124 Group	2
Third party certified	Kitemark
CD526 Hydraulic Capacity	Out of Range

Dimensions

Frame shape	Rectangular
Manhole shape	Rectangular
Overall frame (A x B)	280 mm x 265 mm
Clear opening (C x D)	225 mm x 225 mm
Frame depth (E)	65mm
Base opening (F x G)	225 mm x 225 mm
Waterway area	210cm ²

AVAILABLE OPTIONS

✓ Screw locking

Screw locking deters unauthorised access to the chamber. An extended shank socket set is required to engage the locking screw.

ACCESSORIES

STOCK CODE	DESCRIPTION
PC/UNIFORM/151076	Uniform chamber adjustment unit 760mm x 100mm x 15mm
PC/UNIFORM/251076	Uniform chamber adjustment unit 760mm x 100mm x 25mm
PC/UNIWEDGE/755012	Uniform support wedge 120mm x 50mm x 75mm
YPCR/U12.5	12.5Kg Unipak rapid curing polyester resin mortar
YPCR/U25	25Kg Unipak rapid curing polyester resin mortar

1. Wrekin Products Ltd is continually seeking to improve our products and therefore reserves the right to alter product specifications without prior notice.
2. It is the responsibility of all users to satisfy themselves the above data is current.
3. Installation details are available on request.
4. All Wrekin products are supplied subject to our [Terms and Conditions of Sale](#)



